

Lannan

## Thomas Joshua Cooper: Carry Me

28 February – 19 April 2015

All photographs selenium-toned chloro-bromide gelatin silver prints

### Hallway



*Drowned Trees along the Mississippi*

*From source to sea*

*Continuing observations on an American history of place*

*late afternoon – drowned trees and bog cotton*

*The headwaters and source stream of the Mississippi River*

*“the dark path is the river”*

*Lake Itasca State Park*

*Clearwater County*

*Minnesota, U.S.A.*

*2010/2014*

*This, the true source of the Mississippi River was finally determined by Henry Schoolcraft in 1832.*

36 x 28 inches

2014.21



*Drowned Trees along the Mississippi*

*From source to sea*

*Continuing observations on an American history of place  
drowning trees and brush*

*The confluence of the Illinois River and the upper Mississippi River (East Bank)*

*Near Grafton, Jersey County*

*Illinois, U.S.A.*

*2010/2014*

*The Illinois River is a principle tributary of the Mississippi River. The first European discovery of the Illinois River was made by the French, probably priests, in 1673.*

*32 x 37 ½ inches*

*2014.22*



*Drowned Trees along the Mississippi*

*From source to sea*

*Continuing observations on an American history of place  
drowning trees –*

*Looking West - towards Exile – and the so-called “Indian Nations”*

*The East Bank or the lower Mississippi River*

*Trail of Tears State Park*

*near Jackson, Cape Girardeau County*

*Mississippi, U.S.A.*

*2010/2014*

*A start point for the Trail of Tears, and forced removal of the Cherokee Nation, from their traditional homelands East of the Mississippi River, to the West and across the Mississippi to involuntary relocation into "Indian Territory". This action was made possible, and legal, by the Act of Congress, the Indian Removal Act (1830).*

36 x 28 inches  
2014.23



*Drowned Trees along the Mississippi  
From source to sea  
Continuing observations on an American history of place  
Remembering my father's tribal grand parents  
The Little Blue, near Big Cabin Creek  
and the Neosho River  
Mayes County  
Oklahoma, U.S.A.  
2003/2014  
36x28 inches  
2014.24*



*Drowned Trees along the Mississippi  
From source to sea  
Continuing observations on an American history of place  
last good byes – hidden dangers  
Weeping Willows on the Trail of Tears  
The East Bank of the lower Mississippi River  
Trail of Tears State Park near Jackson Cape Girardeau County*

*Mississippi, U.S.A.*

*2010/2014*

*(Whilst making this picture, I unexpectedly sank into a camouflaged sinkhole. I was being sucked down quickly. Luckily my guide rescued me. The picture was successfully made. It was Friday the 13<sup>th</sup>! There were butterflies fluttering all about – perhaps “spirits” of my Cherokee ancestors were trying to help... I lost my wonderful Danner boots (almost impossible to imagine how) in that sinkhole. They were stripped of my feet. I was in just below my waist when finally rescued. Those boots had taken me to both Poles and back. In all, I was very, very lucky to escape.)*

*36 x 28 inches*

*2014.25*



*Drowned Trees along the Mississippi*

*From source to sea*

*Continuing observations on an American history of place  
hot afternoon – drowning trees*

*The confluence of the Dubois and the lower Mississippi Rivers (East Bank)*

*Madison County, Illinois, U.S.A., 2010/2014*

*Lewis and Clarke reputedly crossed the Mississippi River into the continental American West at this point, in 1804. It is possibly their “Camp Wood” site.*

*36 x 28 inches*

*2014.26*

## Conference Room



*Shoshone Falls: A Premonitional Work, message to Timothy H. O'Sullivan, Gullfoss (Golden Falls), Iceland, 1987, Part 1 of a 2-part work*

15 x 18 inches  
2012.76.01



*Shoshone Falls: A Premonitional Work, message to Timothy H. O'Sullivan, Gullfoss (Golden Falls), Iceland, 1987, Part 2 of a 2-part work*

15 x 18 inches  
2012.76.02



*Shoshone Falls: Mythic Stone, A Premonitional Work, message to Timothy H. O'Sullivan, Gullfoss (Golden Falls), Iceland, 1987*

15 x 18 inches  
2012.75



*Shoshone Falls: A Premonitional Work, Gullfoss (Golden Falls), Iceland, 1987*

15 x 18 inches

2012.74



*Proofs with Notes for the Series: Drowned Trees along the Mississippi, From source to sea  
Continuing observations on an American history of place*

32 x 37 1/2 inches

2014.30

## Gallery



*Shoshone Falls: The Snake River, "The Funnel", No.1, Piller Falls Canyon, Twin Falls County, Idaho, USA, 2003-2004*

15 x 18 inches

2012.73



*Shoshone Falls: The Snake River, Cauldron Linn, No. 2, Jerome County, Idaho, USA, 2003-2004*

15 x 18 inches

2012.78



*Shoshone Falls: Riolite Rocks, Shoshone Falls, The Snake River Basin, The East Bank Rim Top, Twin Falls County, Idaho, USA, 2003-2004*

15 x 18 inches

2012.79



*Shoshone Falls: The Snake River, Pillar Falls Canyon, Twin Falls County, Idaho, USA, 2003-2004*

15 x 18 inches

2012.80



*Shoshone Falls: Pillar Rock and The Snake River, Pillar Falls Canyon, Twin Falls County, Idaho, USA, 2003-2004*

15 x 18 inches

2012.81





*Shoshone Falls: The Snake River, "The Fullel", No. 3, Pillar Falls, Twin Falls County, Idaho, USA, 2003-2004*

15 x 18 inches

2012.84



*Shoshone Falls: Shoshone Falls and The Snake River Basin, The West Bank Rim Top, Jerome County, Idaho, USA, 2003-2004*

15 x 18 inches

2012.82



*Shoshone Falls: High Noon, Shoshone Falls, From the Floor of the Snake River Basin, The Jerome and Twin Falls County Borderline, Idaho, USA, 2003-2004*

15 x 18 inches

2012.87



*Shoshone Falls: Early Evening, Shoshone Falls, From the Floor of the Snake River Basin, The Jerome and Twin Falls County Borderline, Idaho, USA, 2003-2004*

15 x 18 inches  
2012.85



*Shoshone Falls: Early Morning, Shoshone Falls, From the Floor of the Snake River Basin, The Jerome and Twin Falls County Borderline, Idaho, USA, 2003-2004*

15 x 18 inches  
2012.86



*Shoshone Falls: Shoshone Falls and The Snake River Basin, The East Bank Rim Top, Jerome County, Idaho, USA, 2003-2004*

15 x 18 inches  
2012.83



*Shoshone Falls: High Noon, Binding Light and Heat, Boulder and The Snake River, Pillar Falls Canyon, Twin Falls County, Idaho, USA, 2003-2004*

15 x 18 inches  
2012.90



*Shoshone Falls: "Bridal Falls", Shoshone Falls, The Snake River Basin, The West Bank Rim Top, Jerome County, Idaho, USA, 2003-2004, Part 1 of a 2 part work*

15 x 18 inches  
2012.91.01



*Shoshone Falls: High Noon, Boulder with Wave Water Mark, Along the Snake River (Thinking About Hokusai), Pillar Falls Canyon, Jerome County, Idaho, USA, 2003-2004*

15 x 18 inches  
2012.88



*Shoshone Falls: "Bridal Falls", Shoshone Falls, The Snake River Basin, The West Bank Floor, Jerome County, Idaho, USA, 2003-2004, Part 2 of a 2 part work*

15 x 18 inches  
2012.91.02



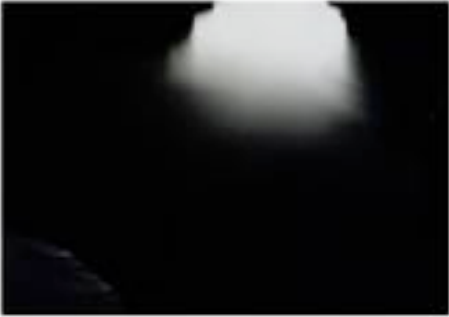
*Shoshone Falls: Broken Boulder, Pillar Falls Canyon, Jerome County, Idaho, USA, 2003-2004,*

15 x 18 inches  
2012.77



*Shoshone Falls: Lingering Twighling, The First View, Shoshone Falls, Centre Rim Top, The Snake River Basin, The Twin Falls and The Jerome County Borderline, Idaho, USA, 2003-2004,*

15 x 18 inches  
2012.92



*Shoshone Falls: Sudden Nightfall, The Last View, Shoshone Falls, Centre Rim Top, The Snake River Basin, The Twin Falls and The Jerome County Borderline, Idaho, USA, 2003-2004,*

15 x 18 inches

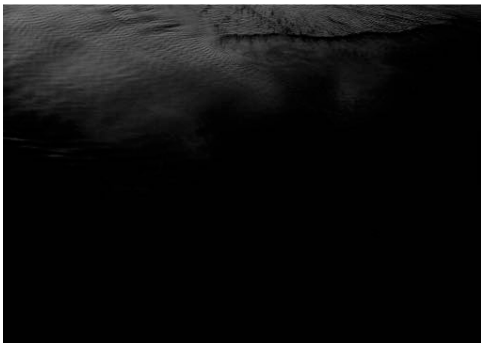
2012.93



*The Great River, Snow Storm-Life Line, Rio Grande River Crossings, The Source of the Rio Grande, Mineral County, Colorado, USA, 1995*

30 x 38 inches

2001.73.01



*The Great River, Snow Storm-Life Line, Rio Grande River Crossings, The Rio Grande-Looking North, Bridge Street, Albuquerque, New Mexico, 1995*

30 x 38 inches

2001.73.02



*The Great River-Rio Grande River Crossings-The Source to the Sea, Boca Chica/Little Mouth, The Mouth of the Rio Grande (The Day After Cinco de Mayo) at the Gulf of Mexico, The Texas and Mexico Borders, 1996*

30 x 38 inches

2001.73.03



*Drowned Trees along the Mississippi*

*From source to sea*

*Continuing observations on an American history of place*

*high wind – bright hot sun*

*lapsing shore waves –*

*Lake Chilcot at the lower Mississippi River (East Bank)*

*Chilcot State Park, Near Lake Village, Chilcot County, Arkansas, U.S.A., 2010/2014*

*Lake Chilcot is the site of Hernan de Soto's death in 1542. In 1541 he became the first European to discover the Mississippi River. Lake Chilcot is the largest oxbow lake in the U.S.A.*

36 x 28 inches

2014.27



*Drowned Trees along the Mississippi*

*From source to sea*

*Continuing observations on an American history of place*

*late afternoon – drowned trees*

*Lake Pontchartrain, Near the lower Mississippi River (East Bank)*

*Fontainebleau State Park, St. Tammany Parish, Louisiana, U.S.A., 2010/2014*

*Lake Pontchartrain was originally called the “Wide Water” by local Native Americans. In 1699 the French explorer Pierre La Moyné d’Iberville re-named the lake, Pontchartrain, after Louis Phélypeaux, Comte de Pontchartrain. This man was the Chancellor of France during the reign of the “Sun King”, Louis XIV, for whom Louisiana is named.*

36 x 28 inches

2014.28



*Drowned Trees along the Mississippi*

*From source to sea*

*Continuing observations on an American history of place*

*completely sun-struck and blasted*

*Looking towards the Head of Passes and the mouths of the Mississippi*

*The lower Mississippi River (West Bank), The Mississippi River Delta, Well south of Venice, Plaquemine Parish, Louisiana, U.S.A., 2009/2014*

*The Mississippi River is considered the longest river in North America at 2,330 miles.*

36 x 28 inches

2014.29

## Meeting House



*The Potomac River - looking down river  
Mount Vernon, Fairfax County, Virginia, USA  
2009/2014*

*Looking towards the arterial edge of America – east-southeast from George Washington’s home  
(1754-1799), on the Potomac River.*

20 x 24 inches  
2014.51



*Last Light, Autumn, Along the Pecos River, The Pecos National Wilderness Area, Near Windy  
Bridge, San Miguel County, 2003-2004*

28 x 36 inches  
2004.38





*The mouth of the York River, At Chesapeake Bay,  
The Yorktown Battle Site, York County,  
Virginia, U.S.A., 2009/2014*

*The site of General George Washington's defeat of the English General Earl Cornwallis and the  
victory that won the Revolutionary War for America, 1781.*

20 x 24 inches  
2014.52



*A Beacon for Beacon, High Noon on The Hudson River, Beacon Landing, Beacon, Dutchess  
County, New York, USA, 2000-2003*

28 x 36 inches  
2003.29



*Remembering My Father's Tribal Grandparents, On the Little Blue, Southwest of the Unita Homestead, The Cherokee Nation, Maries County, Oklahoma, U.S.A., 2003/2004*

28 x 36 inches

2004.39



*The James River and The Thorofare Black Point, Jamestowne Island, James City County Virginia, U.S.A.*

2009/2014

*The site of the first successful English colony in America (1607)*

20 x 24 inches

2014.50